

Twickenham & Richmond TRIBUNE

Contents

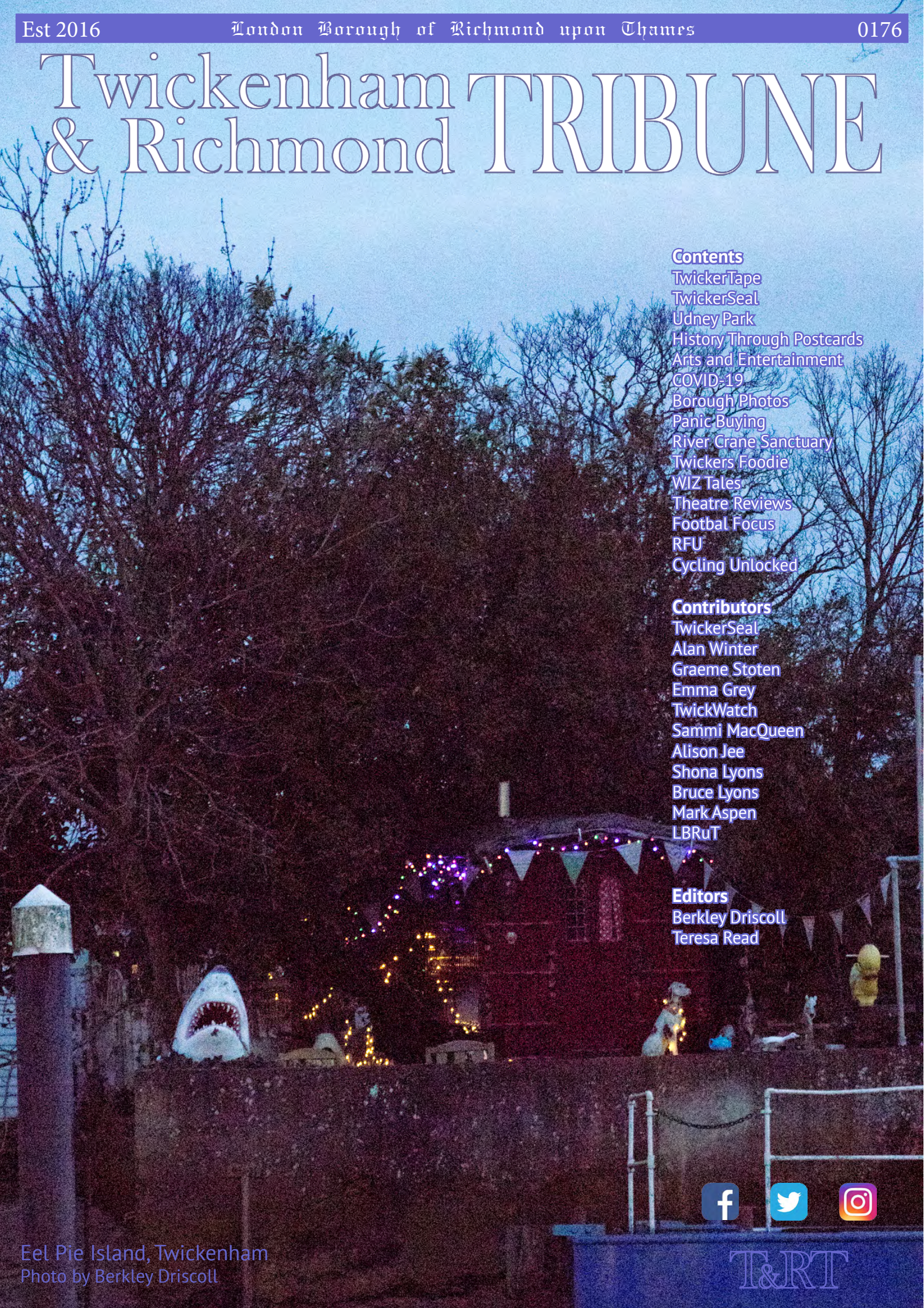
- TwickerTape
- TwickerSeal
- Udney Park
- History Through Postcards
- Arts and Entertainment
- COVID-19
- Borough Photos
- Panic Buying
- River Crane Sanctuary
- Twickers Foodie
- WIZ Tales
- Theatre Reviews
- Football Focus
- RFU
- Cycling Unlocked

Contributors

- TwickerSeal
- Alan Winter
- Graeme Stoten
- Emma Grey
- TwickWatch
- Sammi MacQueen
- Alison Jee
- Shona Lyons
- Bruce Lyons
- Mark Aspen
- LBRuT

Editors

- Berkley Driscoll
- Teresa Read



Eel Pie Island, Twickenham
Photo by Berkley Driscoll



TickerTape - News in Brief

Pubs and restaurants instructed to shut

All pubs, clubs, restaurants, cafes and leisure centres have been told to close from tonight to help stem the spread of coronavirus.

The announcement came as the Government launched a Coronavirus Business Interruption Scheme - promising to pay workers' wages and offer loans and grants to businesses.

Council offers reassurance on Council Tax collection

Finance chiefs in Richmond are offering reassurance to residents who may find themselves struggling to pay their bills during the ongoing Coronavirus outbreak.

With some people facing reduced incomes or job losses as a result of the outbreak, the Council has confirmed it will be relaxing its normal rules on non-payment of Council Tax. Whilst the crisis continues, no enforcement or recovery action will be initiated against people who fall behind with their payments.

COVID-19: track coronavirus cases

Public Health England have produced a Dashboard showing reported cases of coronavirus in the UK, including new cases and cases by upper tier local authority.

Find the desktop version [HERE](#) Find the mobile version [HERE](#)

Lidl Opens In Fulwell

On Thursday morning Lidl opened its new store in Fulwell. Shoppers started queuing before the store had even opened and before long the queue extended all the way around the car park. Local resident TwickerSeal was heard to comment "Get a grip people!"

You can view comments and some video footage on Twitter [HERE](#)

Where There's Smoke

On Thursday police and the fire brigade attended the scene of smoke billowing from the pavement in Richmond following a small explosion of the power network below

skyelectrical

Replacing your halogen recessed lights with LEDs will:

- ✓ SAVE ENERGY
- ✓ SAVE YOU MONEY
- ✓ PROVIDE BETTER LIGHTING

So...

- ✓ CALL US TODAY FOR A FREE HOME ASSESSMENT AND QUOTE

For a timed appointment please call Sky Electrical on 020 8894 1799

22 Fifth Cross Road, Twickenham, Middlesex, TW2 5LF

www.skyelectrical.co.uk

020 8894 1799
info@skyelectrical.co.uk



TwickerSeal

TwickerSeal and TwickerDuck wanted to meet up and chat, but that can prove difficult in these times of self-isolation and social-distancing. They found the ideal spot in the open air with their chums the

Oceanides (aka The Naked Ladies).

They pondered the dichotomy of behaviour they had witnessed in the borough, although this is probably reflected nationwide.

On the one hand we have some quite unseemly behaviour in the supermarkets with panic buying leaving shelves empty, with some 'shoppers' waiting for the daily deliveries and buying up as much as they can.

On the other hand (cue music from Fiddler on the Roof), there are many examples of generous and selfless behaviour. Twitter, Facebook, Nextdoor etc. are full of offers from residents and local businesses offering help and support. Local online sites such as Teddington Town, Twickerati and Crusader Travel are collating and publicising details of local businesses helping out, such as with deliveries, or reserved opening times for the elderly. TwickerSeal was particularly keen to hear if Sandys Fishmongers had a reserved time slot for seals ...



Planning Inquiry Update & Plan B backed by £1M pledge

Public Inquiry finally concludes, 90,000 pages and 4 months after it began

So the 14 day Public Inquiry to determine if Udney Park is a “building plot” or a Playing Field ended on 12th March, with the result due by the end of May. There are only 2 outcomes; Permission Granted or Refused. That said there is a range of interpretation on a Refusal. Permission could be denied on a technicality, though with the Inspector leaving a low barrier to a different Application or it could be a very clear signal that such a speculative attempt to overturn layers of Policy should never be attempted again. We remain confident for a “No – Never” outcome, especially after such a strong Local Green Space ruling.

The Trust employed an experienced Barrister and a leading independent Planning Consultant for 14 days and a top Ecologist for 4 days. Our Planner had to balance holistically “harm” against “benefits”, and he was very strong in his evidence that the scheme is impossible to justify against all precedent cases and National, GLA & Local Policy.

Plan B backed by £1m pledge

The Inquiry also heard the fantastic news that Plan B now has a commitment of £1million to acquire Udney Park using the “Asset of Community Value” process. Thamesians RFC and Hearts FC are working on Plan B and to become anchor tenants in an amazing community Plan. With a strong foundation other donations and grants are easier to achieve. Plan B is a rational option for Quantum if the Application fails, remember in 2015 Imperial touted UPPF to 69 property companies and received only one “for-profit” bid for the whole site, from Quantum.



Thamesians
RUGBY



HEARTS OF
TEDDLOTHIAN

Thank you “extraordinary community” !

The Public Inquiry was very costly, thanks for your generosity that meant the community was represented, at a cost in excess of £100k. Speculators expect to outgun the Local Authority with leading QCs and experts steam-rolling overstretched public servants. Thanks to you, the voice of those protecting UPPF was heard, a senior Planning Consultant told us ***“it is extraordinary to witness a community so driven to fight a developer and giving so much financially to save the Park”***

Also opposing Quantum were the Council with a leading QC, backed by Sport England and their steadfast barrister. We estimate the cost to defend Udney Park was circa £400k in total, and on top of that, if Quantum are defeated their investors losses are typically offset against other taxable income, so indirectly the public bears half the speculators’ downside risk, including their Inquiry costs.



SAVE
UDNEY PARK

PART 171 - THE BROWN BEAR PUB AT THE QUADRANT IN RICHMOND

Hello everyone. First of all I hope you are all well and stay that way. The last few weeks has brought home that there are far more important things in the world than a weekly column in a local paper covering the local history of our area and supported by vintage photography that has appeared on postcards in the last 125 years.

It then occurred to me that while many people would find themselves very busy as a result of the current situation, there would also be a number of folk confined to their homes who might look forward to something different to read each week. Today's technology not only means that you can have the Tribune delivered to you at home every Saturday but you can also communicate with the columnists and the general readership yourself. That might just go a little way to relieving any potential boredom that might become an issue while spending so much time at home.

So we carry on and I am pleased to say that you are now reading the 171st consecutive weekly local picture postcard page. All previous articles in this column are available in the archives of the Twickenham and Richmond Tribune and are easily accessible from the Home Page.

Oh by the way. I mentioned the old pub at Hampton Court Bridge being the Crown last week. Got that completely wrong, it was of course the Castle. Sorry about that and thanks to John Sheaf for correcting me.

An area of Richmond that has changed significantly in recent years is the Quadrant. In the 1950s and 60s it was a busy part of the town centre which had several pubs all within a few steps of Richmond Market (Condons fruit and vegetable market) which along with the flower seller and close to the underground public toilets was a high footfall area.

The Brown Bear was at 50, The Quadrant and had originally been established as The Bear Tavern in 1705.



Our images start with an early photo from 1890 that shows the Charter day procession in 1890. The borough of Richmond was created in 1890 under a Royal Charter and was abolished in 1965 when it was replaced by the larger London Borough of Richmond upon Thames.



The procession is seen winding past the Brown Bear on the right which still shows the signage of Phillips Brewery in Mortlake. Phillips had merged with Watneys the year earlier but no-one had got round to changing the signage when this photo was taken in 1890

Our next photographic image is produced on a postcard that was posted in 1903. The signage now displays the name of the brewery

as Watney, Combe, Reid which was an amalgamation of several West London breweries and was registered in 1898.

The third image is of a sixties postcard that shows the entrance to The Bear Pit and Forge bars. Interesting to see a branch of Radio Rentals next door. At that time most of us rented our black and white televisions but even I don't remember renting a radio which by then had become a much smaller, transistorised and portable item.

There seems to be some confusion as to the year this popular pub closed down. I think it must have been about the mid-seventies, but I'm sure some of our readers will come up with an exact year. It then became a branch of the Next clothes chain and it is now a branch of the Robert Dyas hardware stores.



Feel free to develop the conversation about the Brown Bear. Did you run it? Did you work there? Did you drink there? Did you see or play in any good bands there? Any interesting stories about the pub or events that happened there? We can come up with a page of Brown Bear memories next week if we get a few in. If that works we can go through the borough pub by pub if you like. That should keep this column going for another two or three years!

I am always looking for old postcards and old photograph albums etc. so if you have any that are sitting unwanted in a drawer, in a box in the loft or in the garage or under a bed, please contact me on 07875 578398 or alanwinter192@hotmail.com I would like to see them and I pay cash! Don't throw old postcards in the skip or recycling bins. Show them to me first! Thanks.



Some good news from Richmond Performing Arts Festival

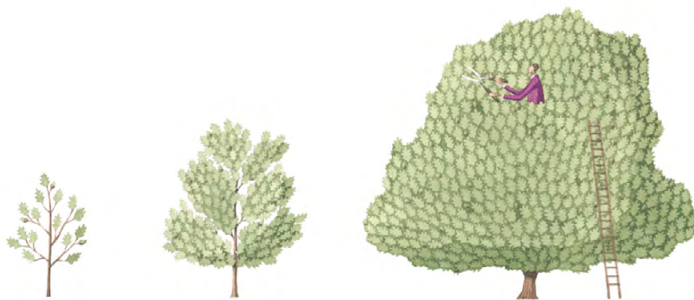
Richmond Performing Arts Festival managed to complete the Vocal, Piano and Brass and Wind sections before having to postpone the Strings and Speech and Drama competitions. On March 15th over 40 young 'blowers' played at Kew Community Centre for nationally renowned music educator Paul Harris. Paul, an inspiring adjudicator, praised the high standards shown by these youngsters from the Richmond area, who in turn benefitted hugely from his wise words.

The Cup for Wind or Brass solo for those aged 12 and under was jointly awarded to Tom Skinner who is a student at the Richmond Music Trust and Anjali McElwaine, who learns the clarinet in Richmond. Another cup winner was Darcey Fryer-Bovill from Hampton, a small girl with a large Marimba who gave a sparkling Junior Recital. There were many other outstanding performances in the older age groups – a full list will be available shortly on www.richmondfestival.org.uk together with the award winners from the piano and vocal sections.



Tom Skinner and Anjali McElwaine, joint winners of the Junior Brass/Wind Solo cup, with adjudicator Paul Harris

The Strings and Speech & Drama sections have been postponed until September when it is hoped the Festival will recommence. The Showcase at Normansfield Theatre has also been postponed until November 15th - fingers crossed and hope the talented young musicians and actors will have an opportunity to display their talents.



The Tree Agency

The Tree Agency

darryl parkin

The Treehouse
25 King Edwards Grove
Teddington, Middlesex TW11 9LY
Telephone 020 8274 0107
Mobile 07960 123580
Fax 020 8274 0119
info@thetreeagency.co.uk
www.thetreeagency.co.uk



ARS LONGA

By Peter Lamb

Our borough is a hive of creative activity. Professional and amateur artists, workshops, exhibitions, galleries, societies, art groups and courses abound. There is a wealth of talent in our community which is particularly evident in the Art House Open Studios and the number of shows by local art groups. Sadly our artists have suffered the distress and disappointment of having their communal activities cancelled and postponed as a result of the current crisis. Exhibitions and classes will not take place in the weeks to come. It's a dire situation, but those who practise art at least have the consolation of continuing their creative work, albeit in a more isolated environment.



I have had to cancel my own exhibition at the Fountain Gallery in East Molesey and have therefore shared in the disappointment of other artists in losing an anticipated event. I was delighted to have a two week period as a guest artist at this charming little gallery and had been working hard in preparation, but it would have gone against the present advice to stay open. I am therefore very grateful to the Twickenham Tribune for giving me a space to say a little about my work and possibly start the occasional feature on local artists for future editions.

I paint mostly in oil and acrylic and the predominant subject of my paintings is landscape. The Dorset coast and the Wessex Downs inspire me, and I respond particularly to those parts of the countryside that have connections with ancient history. I work in a largely figurative, or semi figurative style. However, I paint very much on impulse with the result that my brush and palette venture spontaneously across many other themes and experimental styles. You should not be surprised to find in my collection amongst other things, sheep, hedgehogs, bowls of fruit, cows, bees, fish and a heap of brussels sprouts.



I am a member of the Twickenham Art Circle and have exhibited with them and at the Landmark Art Fairs. You can follow me on Instagram @peterpictor

Twitter: [PLamb_Artist](#) and my website: www.peterlambartist.co.uk

I'd be very pleased chat about my work and art in general.

Do please visit the Fountain Gallery which features different artists every two weeks throughout the year. www.fountaingallery.co.uk

COVID-19

By Teresa Read

Coronaviruses are a large family of viruses which may cause illnesses in animals and humans; some, including SARS and COVID-19, have infected humans.

SARS

The Severe Acute Respiratory Syndrome (SARS) outbreak in 2003 led to over eight thousand cases and eight hundred deaths. SARS was managed by early isolation of the infected person and the quarantine of all contacts. The disease presentation of the virus allowed for early isolation once contacts had been identified (viral shedding took place after patients were ill; peak viral loads were reached at 12-14 days of illness when patients were probably in hospital).

Screening with the use of thermal scanners was carried out for all passengers leaving airports in the affected countries and many countries screened passengers arriving from affected areas.

On 12 March 2003 the World Health Organization (WHO) issued a global alert for a severe form of pneumonia of unknown origin in China, Vietnam, and Hong Kong. By July 2003 SARS had been contained.

COVID-19

The outbreak of COVID-19 (December 2019), in the Chinese city of Wuhan, saw over eighty thousand cases and two thousand eight hundred deaths within two months. At the time of writing the World Health Organization Situation Report for Thursday 19th March 2020 gave the following details for the countries with the most deaths: 3,231 deaths in China, 2,978 in Italy, 598 in Spain, 244 in France, 103 in the UK, 100 in the USA, 1,135 in Iran; and a total of 8,778 deaths worldwide. Deaths in the UK had risen to 177 at the time of writing.

Wuhan, with a population of over eleven million, was the first epicentre of COVID-19 - a centre for commerce and industry with extensive transport and travel infrastructure.

It seems from information available that eighty percent of COVID-19 infections are mild, fifteen percent severe and five percent critical. Like SARS and seasonal influenza, risk of severe infection is associated with the older age group and underlying health conditions.

“The risk of catching COVID-19 from someone with no symptoms at all is very low. However, many people with COVID-19 experience only mild symptoms.” (WHO). Viral shedding can take place 24 to 48 hours before symptoms are present.

The reproductive number – the number of secondary infections generated from one infected individual – is understood to be between 2 and 2.5 for COVID-19 virus, higher than for influenza.” (WHO).

Vaccines

Clinical trials are taking place in China and there are a number of vaccines in development for COVID-19. However, there are currently no licensed vaccines for COVID-19.

The World Health Organization: Test, Test, Test

Director-General of the World Health Organization, Tedros Adhanom Ghebreyesus, said this week:

“We have a simple message for all countries – test, test, test. All countries should be able to test all suspected cases, they cannot fight a pandemic blindfolded.

We don't even talk about containment for seasonal flu – it's just not possible. But it is possible for Covid-19. We don't do **contact-tracing** for seasonal flu – **but countries should do it for Covid-19, because it will prevent infections and save lives.** Containment is possible.

If they test positive, isolate them and find out who they have been in close contact with before they developed symptoms and test them too.”

In 2004 the Hong Kong police won the Stockholm Challenge for their project “Policing Disease”. The award was recognition of the innovation and flexibility of the healthcare professionals and civil servants in successfully combining the police's criminal tracking system with the Hospital Authority's bedside clinical information for tracing close contacts of SARS patients.

World Health Organization Situation Reports

<https://www.who.int/emergencies/diseases/novel-coronavirus-2019/situation-reports>

UK Government Advice

<https://www.gov.uk/government/publications/covid-19-guidance-on-social-distancing-and-for-vulnerable-people/guidance-on-social-distancing-for-everyone-in-the-uk-and-protecting-older-people-and-vulnerable-adults>

REMEMBER:

Regular hand washing, social distancing, avoiding touching eyes, nose and mouth, respiratory hygiene and seeking medical advice if you have a fever, cough and difficulty breathing.

Borough View

By Graeme Stoten

‘Magnolia bloom’

Prized for their large tulip or star shaped flowers,



Magnolias are bursting into glorious flower and lighting up our borough's streets and gardens at the onset of this early spring. Invariably pink or white, their sweet smelling scent attract bees and pollinators and are a wonderful ornamental addition to our green spaces.

**PREMIER WINE is offering a 6th
bottle FREE when you buy 5**

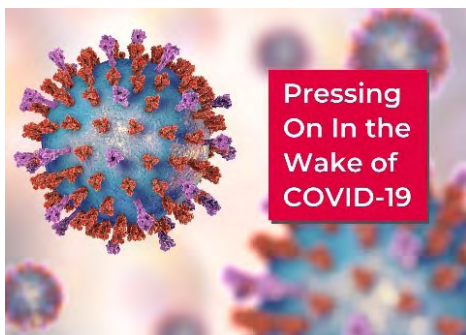
**56 Tower Road TW1 4PE
91 Stanley Road TW11 8UB**



Terms & conditions apply: Sparkling, fortified, existing offers not applicable

Never Mind - Never Mind - Never Mind

By:TwickWatch



I'm alright Jack! Who cares about the elderly and vulnerable in our society? As long as I am alright why should I care about anyone else? Why should I be inconvenienced? Yes - I have elderly neighbours with mobility problems who cannot panic buy like me – so what! If you agree with any of these statements shame on you!

TwickWatch this week saw a gentleman of 101 very slowly get to a local supermarket convenience store aided by his walking stick, only to find he could not get butter or toilet rolls due to panic buying. This was the same for several other pensioners I saw. They didn't have cars to load up with panic buying or travel round to find what they needed. They were some of the people responsible for the "good life" most of us enjoy now. Fighting for us all in the last war and their families enduring years of rationing. We don't seem able nowadays to cope with just a few months of inconvenience or do the panic buyers want to force us back to the "old days?"

After war was declared in September 1939, the British government had to cut down on the amount of food it brought in from abroad as German submarines started attacking British supply ships. There was a worry that this would lead to shortages of food supplies in the shops so the British government decided to introduce a system of rationing. Rationing made sure that people got an equal amount of food every week. The government was worried that as food became scarcer, prices would rise and poorer people might not be able to afford to eat. There was also a danger that some people might hoard food, leaving none for others.

A typical ration, of key goods, for one adult per week, met basic needs resulting in people generally becoming healthier:

| | |
|---|---------------------------------------|
| Butter: 50g (2oz) weekly | Cheese: 2oz (50g) weekly |
| Bacon and ham: 100g (4oz) weekly | Eggs: 1 fresh egg a week. |
| Margarine: 100g (4oz) weekly | Tea: 50g (2oz). weekly |
| Sugar: 225g (8oz). weekly | Jam: 450g (1lb) every two months. |
| Meat: To the value of 1s.2d (one shilling and six-pence per week. That is about 6p today) | Dried eggs 1 packet every four weeks. |
| Milk: 3 pints (1800ml) occasionally dropping to 2 pints (1200ml). weekly | Sweets: 350g (12oz) every four weeks |



Only one toilet roll was allowed per family per week. Many families used newspaper as toilet paper cut in pieces and hung from a string. The older generation will remember IZAL toilet paper, a rather scratchy tracing paper-like version impregnated with IZAL disinfectant and often found in public service buildings. Nowadays a shower can do a better job for our ablutions!

Food rationing lasted for 14 years in Britain, from 1940 until 1954. Rationing continued even after the war ended:

- Meat rationing continued for 10 years after D-Day (June 1954)
- In 1946, when food was just as short as during the preceding years, bread was added to the ration and the sweet ration was halved.

Current panic measures can do far more harm than good. They create the idea that we are in the midst of a terrifying plague that will kill us all, when the truth - though disturbing - is far less frightening. Flu pandemics have been far worse on past occasions but similar precautions applied as for any virus.

On Thursday 3 January 2019 (2018/2019 winter season) the national influenza report included the following; “The flu virus can live for many hours on hard surfaces, and therefore practising good hand hygiene can limit the spread of germs and transmission of flu.”

- “People with flu-like symptoms are advised to catch coughs and sneezes in a tissue, bin it, and then wash their hands afterwards with soap and warm water to kill the germs.
- People should frequently clean used surfaces to stop the spread of flu.
- Avoid having unnecessary contact with other people if you or they have symptoms of flu. Seasonal flu usually circulates for several weeks each year.
- The intensity of circulation depends upon the underlying population immunity, the circulating viruses and external factors such as the weather. It is an unpredictable virus and it is not possible to anticipate how flu levels will progress.”

Each year more than 1,700 people die in road crashes, and another 25,000 are seriously injured, and it barely registers, because their lives are ended or ruined in ones and twos.

The fact that people are more concerned about COVID-19 than the flu virus is no surprise, “Anytime there is a new emerging infectious disease that is shrouded in mystery with a lot of unknowns, it captivates people in a way that a regular virus that people deal with on a yearly basis won’t.”

“Most illnesses start out mild, you get sicker, and then you start getting better,” - “If you’re getting sicker and sicker, don’t wait it out.” Ring 111. Follow Mom’s advice too: Get plenty of rest, and stay hydrated to give your body the best shot at beating the virus safely and quickly.

The truth is, people with what are called ‘underlying conditions’, including many of which follow decades without exercise, are in danger not just from coronavirus but from almost everything. It is important to read or listen to and take onboard government health advice during the COVID-19 outbreak specially to help the more vulnerable people.

Carrying a few sheets of paper kitchen towel to wipe your hands after washing them rather than using a hand dryer that blows everywhere, is maybe a thought to ponder and “maybe that glass in the pub”.

Normal service will be resumed eventually and many lessons will be learned. It is to be hoped that from bad eventually good will come.

It is also to be hoped that our supermarkets will all act responsibly at this time. Locals refer to the Tesco Metro at St Margarets Twickenham for instance and have commented on the seemingly uncontrolled panic buying being allowed and the almost daily price rises of the other general goods on sale. It is to be hoped that their observations are not as perceived.

A supplier to local butchers and fish and chip shops advises stocks of chicken are very minimal and getting harder to obtain, due to supermarkets outbidding suppliers to local shops. Begs the question profits or people?

KEEP UP TO DATE

Government Guidance <https://www.gov.uk/guidance/coronavirus-covid-19-information-for-the-public>

“In Your Area” Virus Statistics (Richmond Borough) [View local statistics here](#)

WorldOMeter <https://www.worldometers.info/coronavirus/>

Non-perishable food and essentials urgently needed

Businesses and residents are urged to come forward and help support some of the boroughs older and most vulnerable residents, who are struggling to get the shopping they need during this pandemic.

With panic buying common across the country, there are many local older people and those at risk not being able to access adequate provisions.

Age UK Richmond along with 19 other local charities under the Community Independent Living Service (CILS partnership) in collaboration with Richmond Council are working together to help and support the most in need during the current unprecedented COVID-19 health crisis.

From Monday the 23rd of March, they will start taking donations of food and household items from the public and local businesses, which will then be delivered via a trustworthy network of third sector staff members and DBS checked volunteers.

Non-perishable donations needed: tinned soup, fruit and vegetables, tinned meat and fish, powdered milk, rice, pasta and sauces, cereals, biscuits, crisps, toilet rolls and personal care items for example: baby wipes, incontinence pads and cleaning products.

Donations accepted from Monday 23 March, 9am till 2pm until further notice at: Twickenham Wellbeing Centre, Arragon Road, Twickenham, London, TW1 3NH.



Please drop your donations and we will ensure they reach housebound older and most at risk people that need them during COVID-19 pandemic.

CLlr Michael Wilson, Lead Member for Communities and the Voluntary Sector, said:
“Over the past few days we have seen amazing displays of community spirit. And we have to continue with these efforts. Despite Government and supermarket pleas, people are still panic buying. And, this has meant it is almost impossible for some of our more vulnerable residents and key workers to even buy milk or bread. We can’t stop people buying excess food. But, we can all rally together and help support some of our older residents and those at risk. It isn’t fair that they have to suffer because we all apparently “need” dozens of toilet rolls and 30 tins of beans. I would like to thank our amazing voluntary sector groups for being so proactive with this initiative. Without them, so many people would be isolated in their own homes and not able to eat or access healthcare. But these groups need your help. Businesses – please can you set aside some donations, and residents, particularly those who could share, please take a look inside your cupboards and think about whether some of the items can be donated to these vital groups.”

See more information about [other ways you can help.](#)

CrusaderTravel



020 8744 0474

Escapology Experts

crusadertravel.com

info@crusadertravel.com



We are here for you

020 8744 0474

info@crusadertravel.com



An update from our Borough Commander, Sally Benatar

Ahead of the weekend we wanted to reassure you that we will continue to provide a full policing service with our teams responding to your emergency calls and the safer neighbourhood teams patrolling their local beat.

We are aware of the concern on social media regarding supermarkets, panic buying, food supply and public disobedience. The Government advice for shoppers remains the same; that the public should be sensible when buying food and groceries and there is no need to panic buy produce.

Thankfully, we are not seeing any evidence of public disobedience in London at this point in time but we are aware that our communities are worried about this issue locally, so we will be deploying officers in our local areas to provide a reassuring presence.

In addition to the above, I would also like to touch on the following points:

Firstly, we have been made aware of scammers exploiting the COVID-19 pandemic to commit fraud. Earlier today, we released information about these scams. Please read about this very important topic and tell your friends, families and neighbours about it too! Click here for details of the scams and our crime prevention advice: <http://news.met.police.uk/news/warning-issued-to-the-public-over-coronavirus-related-fraud-397764>

Secondly, in these unprecedented and uncertain times, a lot of people may be turning to faith for comfort, but may not be able to attend their usual place of worship due to the restrictions of social gatherings. Yesterday (Thursday, 19 March), Deputy Commissioner Sir Stephen House held a faith breakfast call.

In his call with religious leaders, Sir Stephen said: "The mission of the Met's policing plan remains to meet the needs of Londoners, and we remain committed to the Peelian principles of policing by consent."



Today (Friday, 20 March) faith groups will virtually meet with the Mayor of London to discuss issues affecting them and the details of this meeting have been communicated through the London Boroughs faith networks.

On Tuesday, 24 March, there is an opportunity for all faith groups to join a Faith Sector Network call (run by the London Boroughs) at 1730hrs. So faith groups wanting to join this call should email: CONVENER@LBFN.ORG

Lastly, a reminder about the importance of reporting Hate crime.

Yesterday, a central MPS community reference group conference call was held where we actively encouraged people to report any adverse behaviour to police and we spoke to a number of victims who shared their experiences and views. Specialist officers continue to monitor the reports of hate crime we are receiving and are engaging with victims.

Anyone who believes that they have been the victim of a hate crime is asked to call police on 101 or by tweeting @MetCC.

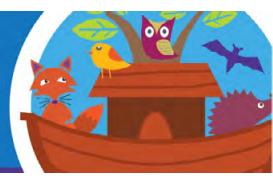
Information can also be reported anonymously to Crimestoppers on 0800 555 111 or online.

Over the weekend, my officers will continue to stand alongside you to keep Londoners safe.

Wishing you a safe weekend.

Sally Benatar, Borough Commander





"Oh, what a tangled web we weave, when first we practise to deceive!" Sir Walter Scott



Butterfly Conservation have recently highlighted the loss of 97% of wildflower meadows since the Second World War and the fact that Butterflies, Bumblebees and Moths are running out of places to go. Their populations are plummeting and we have to be aware of habitat and the need to protect our remaining Trees, Ivy, Nettles and Wild Spaces to tackle the spread of Human and Domesticated Animals impact on areas which are essential for their survival and arguably our own quality of life and food sources which depend on these pollinators. There is Light Pollution along the River Crane Corridor which is getting

worse with loft conversions and extensions with more bright lighting left on late into the night without any awareness of the damage this does to insect life and numbers which are essential for the food chain. New Street, School/Rugby lighting and private lights in sensitive places, are left on unnecessarily despite pleas to Officers/Councillors to look into the situation and ACT. This lighting destroys dark corridors for bats seeking transit lines back to the river and floods with bright LED glare previous dark MOL/Nature areas. It can also promote a build in sites which Developers seek to mitigate objections which highlight dark space as a valid criterion for refusal on ecology grounds.

It is amazing how 'green' people become when seeking to develop in 'sensitive areas'.



Robin found a 'nest' in this wine box last year with a bar code not post code so luckily for this family it is council tax exempt. This Song thrush is also seeking 'A place to call home' and nesting time now means we must take care when cutting hedges to be aware of nest sites.



**River Crane Sanctuary [website](#)
[Instagram](#)**

Please click above to join us in raising awareness of nature issues in our neighbourhood.

The Royal Parks remain open for visitors to boost physical and mental wellbeing

The Royal Parks will remain open for visitors who are encouraged to come and spend time in nature, relax or exercise, whilst still ensuring they follow government advice about social distancing.

The parks provide visitors with crucial access to vital green spaces and present a wealth of opportunities for visitors to help boost their physical and mental wellbeing in these uncertain times.

The Royal Parks charity is closely monitoring [Government advice on COVID-19 and is following the advice of Public Health England](#). In order to prevent the spread of the virus through social contact in a busy space, the charity is taking all appropriate measures to keep visitors safe and healthy during this time.

The following measures have been put in place:

- All playgrounds will be closed to public access from Wednesday 18th March until further notice, in order to help people with social distancing.
- All sports bookings (including school bookings) at The Hub in The Regent's Park will be cancelled with immediate effect until 19th April, when the situation will be reviewed. No additional bookings will be taken until further notice.
- Cafés and some catering kiosks remain open but people are being asked to follow Government advice with regard to social distancing when collecting food and drinks.
- All of The Royal Parks' learning and education programmes, community programmes and volunteer activities have been cancelled with immediate effect until the end of April, when we will review the situation.
- All small events being held in a Royal Park between 18th March and 30th April will be cancelled.
- Park toilets will remain free of charge until further notice, in order to provide visitors with hand washing facilities.
- All park offices are now closed to the public until further notice.

Tom Jarvis, Director of Parks, said: "The Royal Parks have always been there for locals and visitors, providing the green lungs of the city and hosting incredible wildlife and heritage. And, now more than ever, these vital assets offer a tranquil haven for visitors to come to boost their physical and mental wellbeing.

"In these difficult times, we're welcoming people to London's eight historic Royal Parks to relax, exercise and engage in nature. Staying fit and well is particularly important, and we ask visitors to follow the Government's advice and carry out social distancing to prevent the disease spreading, by protecting themselves and others.

"Our charity is closely following and monitoring Government and Public Health England's guidance and we're responding with daily updates as the situation unfolds."

Please check The Royal Parks' website for daily updates www.royalparks.org.uk/coronavirus as well as our Twitter feed [@theroyalparks](https://twitter.com/theroyalparks) .



Corona Virus and how it is affecting us locally.

By Shona Lyons

CRUSADER TRAVEL

Shona's
Gallery



Yes, these are unprecedented times! We have never known anything like it.

Regarding local Church Street & Twickenham Town news, we are still collecting for the local homeless and although Bruce and Hedda and my colleagues will be self-isolating and working remotely I will try and man the office here at Crusader Travel as much as possible as I know many people will be anxious about the holidays they have booked www.crusadertravel.com

Right now the homeless are particularly vulnerable as they have nowhere to go to self-isolate and can't buy hand-sanitizer and try and protect themselves as much as we all can do so we will still maintain our collections for them.

We will be putting the chess out as much as possible every day for people to come and play and enjoy the pretty square, now in particular, it is full of spring blooms). We will also leave the table out for people to sit at. They can always bring sandwiches. As long as social distance is observed.

**We urgently need your old
Sleeping bags & men's clothes
e.g hats, Scarves, gloves,
Socks, Rucksacks, thermals,
jeans, new underpants, T Shirts
jumpers, sweat shirts/pants,
jackets. They are donated to the
borough's homeless** 

Please bring to Crusader Travel,
58 Church Street, Twickenham, TW1 3NR
All donations very gratefully received



The Easter Parade is cancelled and also The Twickenham Festival as we just can't plan so far ahead now in this unpredictable situation, many of the different aspects of the festival run by others were also cancelled and we just didn't feel it responsible to go ahead with it not knowing how & when this virus will peak and how it is going to affect us all.

Many restaurants and also the Brewery Market in Church Street are offering Take away service, grocery & delivery services such as Corto, Pulcinella and Tsaretta Spice, Rosie Chai, Masaniello & Limpopo Butchers.

Also many of the gift shops have stayed open for the time being and also the Bloomery is offering Mother's day Bouquets.

<http://tsarettaspice.com/locations/twickenham>

<http://www.osteriapulcinella.co.uk/>

<http://www.masaniello.org/twickenham/contact-masaniello-restaurant-twickenham.php>

<https://brewerymarket.co.uk/>

<https://www.facebook.com/cortodeli/>

<https://www.facebook.com/limpopotwickenham/>

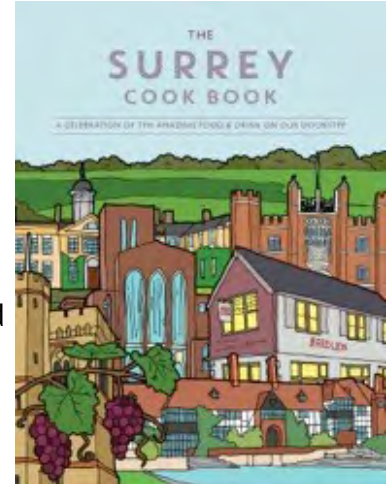
<https://www.facebook.com/RosieChaiTeaRoomTwickenham>

<https://www.thebloomery.co.uk/>

SOMETHING TO LOOK FORWARD TO

I was supposed to be going to a launch event last Tuesday evening for a lovely new cookbook – **The Surrey Cook Book** – but, quite understandably, the event was cancelled. It was to have been held at Secretts' Farm and would have been a celebration of the essence of Surrey. I know Twickenham isn't actually in Surrey, but Richmond Borough is, and to be honest I tend to think of us as living in Surrey or Greater London, rather than Middlesex!

The Surrey Cook Book is the latest addition to Meze Publishing's 'Get Stuck In' series of regional cookbooks, this time taking us through the enticing culinary landscape of Surrey. The journey unfolds through the beautiful Surrey Hills, an area renowned for its farming community and array of local enterprises. The book brings together local restaurants, cafés, butchers, distilleries, vineyards and even a family-run nursing home, complete with beehives producing its own honey. This is a beautiful reminder that there are so many fabulous places for us to visit and enjoy once this dreadful Coronavirus has passed, and we are again free to roam and explore our surroundings with friends and family. The Surrey Cook Book retails at just £14.95 from most bookshops or online.



I've chosen a couple of recipes from the book for you this week – a beef dish from **The Red Lion in Shepperton** and delicious cookies from The Cookie Bar in Hindhead. You can always halve the ingredients don't forget. Hopefully you have most of the ingredients to hand, or you can improvise, but do remember that many of our local shops will take a telephone order that you can drop round later to collect and minimise contact with others. It is so important to support our local independent shops at this difficult time.

Slow-Cooked Short Rib and Salt-Baked Celeriac

This recipe takes a shoe leather-tough piece of beef and slowly transforms it into a succulent and delicious dish. Aged on the bone, marbled, and also known as Jacobs Ladder, this is one of our favourite cuts.

Preparation time: 30 minutes / Cooking time: 16 hours / Serves: 8

Ingredients

8 pieces of short rib on the bone, cut between 190g-220g (ask your local butcher)

For the marinade

700ml water
150ml light soy sauce
100ml apple juice
20ml mirin
20ml sesame oil
240g sugar
400ml good beef gravy

For the salt baked celeriac

2 large celeriac (roughly 400g each)
525g plain flour
275ml water
8 egg whites

Method

For the marinade: Combine all the ingredients in a saucepan, bring to the boil, turn down and simmer for 10 minutes. Set aside

Sear the short ribs in a frying pan with a little oil until browned all over, then transfer them to a deep tray. Cover the meat with the marinade then tightly cover the tray with one layer of baking parchment and two



layers of tin foil to keep the heat locked in. Cook the beef for 16 hours at 90°C in the oven (overnight might be the best time to do this, ready for lunch or dinner the next day).

Remove the beef from the tray and place onto a chopping board or large plate. Pour the sauce into a large deep-sided frying pan, bring to the boil and then reduce to a shiny glaze. Gently pull out the bone from each of the short rib pieces and place the meat in the pan, gently turning each piece to coat it in the sauce.

For the salt baked celeriac: Wash the celeriac thoroughly, trim off any roots and slice a small slither off the base so they sit flat.

Mix the rest of the ingredients together to make a paste. Line a tray with baking parchment, put two small dollops of the salt crust down for, ensuring they are wider than the celeriac base. Sit the celeriac on top and use the rest of the salt crust to completely cover them. Bake in the oven at 160°C for 2 hours 30 minutes, or until a skewer can penetrate through to the centre without resistance.

To serve: A lovely sociable way of serving this for a dinner party would be to put the beef in a nice serving dish on the table with some fresh watercress on top. For the celeriac, use the heel of a knife to gently crack the salt crust, creating a lid, and place them on the table with a serving spoon. You can add any other sides of your choice, but a good horseradish is a must!

At The Red Lion we allow the celeriac to cool so we can cut a nice big cube out, then fry this in a non-stick pan with butter until golden. We also serve the beef with buttered sprout tops, crushed carrot and swede, and horseradish. We hope you enjoy this simple but delicious dish

White Chocolate and Raspberry Cookie Dough

Chunks of creamy white chocolate contrast beautifully with the sweet raspberries in every bite of these mouth-watering cookies

Preparation time: 20 minutes / Cooking time: 12-15 minutes/ Serves 8

Ingredients

125g unsalted butter (at room temperature)
160g caster sugar
140g light brown sugar
2 eggs
1 tsp vanilla extract
350g self-raising flour
½ level tsp salt
½ level tsp baking powder
125g white chocolate chunks
75g frozen raspberries

Method

In a mixing bowl, cream together the butter with the caster and light brown sugars.

Gradually beat in the eggs and vanilla extract, adding a tablespoon of flour with the egg to stop the mixture curdling. Sift in the flour, baking powder and salt, and mix well. Add the chocolate chunks.

It is best to chill the dough for approx. 2 hours before adding the raspberries. Wrap the dough in cling film and place in fridge to chill.

Preheat the oven to 170°C/150°C fan/gas 4. Line a baking tray with greaseproof baking paper.

Remove the dough from the fridge. Using a rolling pin, roll the dough into a 25 x 15cm rectangle. Dot the frozen raspberries over the dough, then roll together from the longest edge into a sausage shape.

The best results for these cookies are when the dough is cooked from frozen, so if you have time, you can freeze the dough at this stage. However, if you can't wait that long, cut the dough into approx. 1.5cm slices and place on the lined baking tray.

Bake in the preheated oven for 10-12 minutes if cooking from chilled (or if cooking from frozen, bake for 12-14 minutes).

Allow to cool on the baking sheet for 5 minutes, and then transfer to a rack to cool completely.

Follow Alison on instagram [@theseasonedgastronome](https://www.instagram.com/theseasonedgastronome)



The Marriage of Figaro

by Wolfgang Amadeus Mozart, libretto by Lorenzo Da Ponte, after Beaumarchais
 ENO and Oper Wuppertal at the London Coliseum, previously scheduled until 18th April

Through the four doors of Johannes Schütz's set – a white Ikea bookcase denuded of its shelves – the cast appear and disappear like the little figures in an antique weather house as the overture to Mozart's comic opera is played. Their to-ings and fro-ings and occasionally frozen poses, photos from the weddings that are yet to take place, also forecast the romantic run-around gleefully staged in this uplifting production.



This *Marriage* plays with the idea of the secrets the characters are keeping from one another and plots they are hatching: the doors sometimes keep the rest of the world at bay while they have their confidential conferences, while at other times the action taking place in front of them is for real and the doors open on to the imagination or unconscious, like eerily lit erotic tableaux from a Soho of yesteryear.

The farce is well choreographed in these two dimensions, but director Joe Hill-Gibbins is keen to add a third: hoisted into the gods, the bookcase is socially as well as physically elevated to become the apartments of the Count and Countess, allowing some nicely coordinated interplay between the nobles above and servants below, oblivious of one another. This increases the tension when the approach of someone below is visible to the audience but not those having a liaison above, enhanced by some

beautiful comic business when horny adolescent Cherubino has to throw himself onto a crashmat hastily positioned under him by the servants.

As the young page, Hanna Hipp's look put me in mind of Tilda Swinton's more androgynous performances. Whether strutting to the lovesong the boy has written or being dressed and redressed by the maids like a doll, Hipp manages to be both impish and ingenuous at the same time



Read Matthew Grierson's review at www.markaspen.com/2020/03/15/the-marriage-of-figaro

Photography by Marc Brenner



Young Writers' Festival 2020

Arts Richmond at The Exchange, Twickenham, 15th March

The much anticipated *Young Writers' Festival 2020* is the culmination of Arts Richmond's annual Young Writers Competition in which school-age authors enter short pieces of literary work, prose or poetry, which are judged by a panel of experts, drawn from literary backgrounds. From over 650 entries, pieces of high quality of the writing, *Young Writers' Festival 2020* presented the six best pieces in each of four age-groups. From these nominations the finalists and winners in each age category were announced.

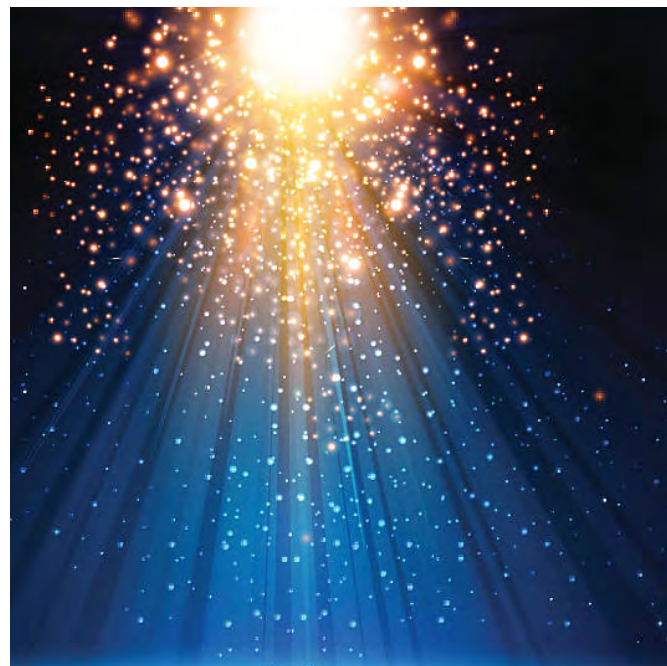


Read strongly by actors, Lauren Anthony, Victoria Morrison and AJ MacGillivray, this unique production opened up with very vibrant work. During readings, two of the actors became three, then two again. Then solo, then together, forming a dramatic and interesting tableau, as Keith Wait's clever directing gave the actors elegant alternatives in their readings. Their rapport came over successfully, and they were clearly comfortable with each other.

An array of intriguing works were read, starting with *The Decider*, a stunning account of fate hinging on five cards. *The Curse of the Headteacher*, had us on the edge of our seats, likewise with the eerie *The Girl*. Not only were these works brilliant prose, they were thrillers too!

This standard of absorption was consistent with the poems. The very poignant and moving *See Me As I Am*, on receiving a diagnoses of Asperger's Syndrome, was counteracted with the hilarious *There's Something At The Bottom Of My Lunch Box*. Both of these pieces were solo, and very appropriately done.

All these remarkable works were by primary pupils, and a second half of strong writing from secondary students followed. *Inside a Depressed Mind*, *Car Crash* and *For My Grandparents* particularly left a strong impression; not to mention the very contemporary *A Poem of Climate Disaster*. All were accompanied by strong direction, skilled projection and bold, detailed lighting



Read Heather Moulson's review at www.markaspen.com/2020/03/16/ywf-2020

Photography by Joe Stockwell

Self - Isolating, Looking Forward

By Bruce Lyons

From tonight till whenever we're home, Hedda and I have been packed off to Eel Pie Island, could be worse!!

I have brought all the spare gardening tools and Shona kindly got loads of seeds from Percy Chapman (shop local!) and fat balls for the Robins, Tits and Chaffinch's as well as seed potatoes.



If you call that stockpiling - then I'm guilty but my little friends have no idea what's going on except the sky is quieter (rather like when the Ash Cloud' stopped flying We're getting loads of emails saying "Together we'll get through this" but Mr Robin doesn't understand - simple philosophy no food ~ hunger!!

As for travel, the week was more like playing snakes and ladders, as soon as you found one way home for a family and issued the boarding passes, the flight was cancelled by the time the clients got to the airport, and all without any notice whatsoever, believe me where ever you had chosen to go, the country was "closing down". Though we were luckier with three lads stuck in Phnom Pen, they made it by the skin on their necks - clever Shona that.



Getting people home has been a priority this week, but worse is the financials with Governments just deciding, bang to close down. It leaves an industry that hasn't ever dealt with a worldwide pandemic to deal with no real rule book to follow, even the Governments don't sing from the same Song Book. As long as we get thru this "Together" or not as the case may be - we will have learnt a lot for next time! As an example, half way thru this week the EU tore up their rule book about traveller's protection and now nobody really knows where the T's are crossed or the I's dotted, they don't seem to know their feet from their hands - not helpful.



Apparently, there are more meetings today to clarify the new rules, are they going to explain what they are doing or change the rules yet again? Nobody really knows. Of course, the clients all want their money back but the official bodies need to help, we didn't start the Pandemic.

The best and safest advice is, when offered, rebook for a later date at no penalty, usually offered for a 12-month period - even up to Easter Next year, but there are a thousand twists to the advice and it simply doesn't work for all,

Right now, events are being cancelled everywhere but to date our own Great River Race is still running and whispers are that BeRichmond have cancelled the May Fair and moved it to September, they must know something we don't!!

We are working remote there will be details on www.crusadertravel.com and on the answer phone and when I'm not working I'll be gardening and hopefully by the time I can drop the Self-isolate and change it to Self-sufficient I will be munching fresh veg from Eel Pie

See you soon - stay safe - and don't forget Crusader, the friendliest travel agent in the borough.

Bruce, Hedda, Shona, Billur and Gaynor





The World InfoZone project started in 1997 in Hong Kong and China; following the Hong Kong school exchange various countries were researched but the project really started in earnest in the year 2000.

One of my students was teaching in Ghana, near Accra, for a few months and it was decided that we should send a computer out to him – we had quite a few at the time. (it should be noted that the project had no outside funding and we were working with the zeal to reach out to the world – a very exciting and very different time). A link to the diary of the teaching placement can be seen below.

Throughout the ten year project many individuals and organizations were contacted in Africa but our African exploration started with personal interest and then ventured into liaison with organizations such as the US Peace Corps.

Although not always easy I managed to get Galleries for every African country. One of the first, and perhaps the most unusual is the Gallery for Namibia sent to me from my good friend Ray Godson. The last time I saw Ray was at his birthday party where I met many old friends. Ray introduced me as “Teresa, who put me on to the internet” – and I was very pleased to do so.

Here are some of the photographs of Namibia from the World InfoZone Gallery. I hope you enjoy them as much as I do.



<http://worldinfozone.com/features.php?section=Mandeep>

St Mary's University Update

Coronavirus (COVID-19) Update – Move to Online Teaching and Event Postponements

Due to the Government's cautionary warnings around the Coronavirus (COVID-19), St Mary's University, Twickenham will move to online teaching from Mon March 23rd until the end of the Semester. All face to face teaching will end at close of play on Wednesday March 18th.

West London Varsity on Weds March 25th.

Following the Prime Minister's announcement this afternoon, that anyone sharing the same house as someone, who has a cough or fever will also need to self-isolate for a period of

14 days, we are awaiting further advice from Public Health England and we will continue to monitor the situation closely, and to provide as much advice, care and support as we can to our University community.

Interim Vice-Chancellor Dave Hartnett comments, "We believe that these decisions are in the best interests of our students and staff as their health and

wellbeing is of paramount importance to us.

"We will do everything we can to provide the best academic experience that we can for our students from the UK and abroad and I'm confident that our staff will be able to deliver effectively the contingency plans that we have been preparing over recent weeks.



St Mary's
University
Twickenham
London

The University is not closed: The University including our Student Accommodation, Library, Chapel, Refectory, Conferencing, Student Services and other services will remain open.

Alongside the adjustments to the delivery of teaching, the University is postponing all upcoming University run events. This includes the Postgraduate Open Evening on Weds March 18th, the Undergraduate Experience Days on Sat March 21st and Sat April 25th, and the

Richmond schools respond robustly to the Covid-19 outbreak

Richmond Council and Achieving for Children are working with schools in Richmond Borough to coordinate a robust and sustainable response to the Covid-19 outbreak.

Following the guidance issued by the Government on Thursday, schools in the borough are identifying children of keyworkers and vulnerable children, such as those with Education, Health and Care Plans and those who have social worker support. Schools will provide education on site for those children for the last two weeks of this term, and some provision during the Easter holidays period.

All schools will therefore be open for their identified children on Monday, and have organised their staffing appropriately so that teachers and other staff can work whilst safely following the Government's health guidance. Schools are of course also keeping in touch with their other pupils who are at home and providing online learning for them.

Achieving for Children and schools are developing 'hub' models so that smaller schools, with fewer staff and resources, remain able to provide an education during term-time and to facilitate provision during the holiday period.

Some clusters of schools are already working in partnership to share resources. For example, Hampton High staff have volunteered to be deployed on a rota basis to teach science, art, drama, and other subjects in the local primary schools, and to run activities on Hampton High's multi-use games area for the primary-aged pupils.



Archdeacon Cambridge's Church of England Primary in Twickenham is working with other, nearby primary schools, to develop a model whereby groups of children from one school can be taught, by their own school's teachers, in another school.

Achieving for Children is looking to expand the hub models so that resources in any one particular school do not get overstretched as the incidence of Covid-19 affects more keyworkers, including school staff themselves.

Cllr Penny Frost, Chair of Richmond Council's Education and Children's Services Committee, said:

"In these difficult and unprecedented times, parents and carers, especially those who are keyworkers and those whose children are vulnerable, can be assured that our schools will pull together and deliver the best possible education under the circumstances. I would like to thank schools for the great job they are doing. We will work together for our children and families for as long it takes, so whatever support schools need, Achieving for Children and Richmond Council will do their absolute utmost to provide it."

Parents and carers can find out more about the current national education arrangements on the [Department for Education website](#).

FOOTBALL FOCUS

By James Dowden

BRENTFORD FC

West London Derby Postponed Due to Coronavirus

Fulham P – P Brentford



Brentford's final West London derby of the season away to Fulham due to be played on Friday 13th March has been postponed indefinitely due to the ongoing Coronavirus pandemic.

Fans have been urged by the club to keep hold of any tickets for when the Championship season resumes. The club has also closed Griffin Park, the box office and shop in lieu of government advice.

The leagues governing body, the EFL, have issued a statement stating that "The primary objective, in order to protect competition integrity, is to deliver a successful conclusion to the 2019/20 season."

With the season halted the Bees currently lie fourth in the table on 60 points, having played 37 games, with five still to go in their quest for the playoffs and potential promotion to the Premier League.

Stay safe Bees fans!

HAMPTON & RICHMOND BOROUGH

Beavers Gain Point In Final Match For Some Time

Hampton 1 – 1 Oxford City



A resilient performance from the Beavers gain a point against Oxford City in what could prove their final match for the foreseeable future due to the ongoing Coronavirus situation.

In contrast to the Premier League and the top four division of English Football the National League had decreed that games in the fifth and sixth tiers would be played. Consequently, Hampton enjoyed something of a crowd boost with 892 in attendance at the Beveree.

Hampton made something of a nightmare start as they found themselves a goal down inside the opening fourteen minutes of the encounter. Hoops attacker drifted in from his left-wing position to fire past Dion-Curtis Henry in goal for Hampton.

Things went from bad to worse for the Beavers as just five minutes later they were reduced to ten men. Club captain Luke Ruddick was dismissed for a stamp of Oxford striker Elliot Benyon meaning that the Beavers would have to play over seventy minutes a man down.

Oxford looked to press home their advantage and Henry was called upon to save from Benyon. From the resulting corner Sam Cox was on hand to clear off the Hampton goal line from Tarik Moore-Azille's goalward flick.

Hampton responded well though and Ryan Hill had two strikes that had Hoops keeper Craig King scrambling to his left-hand side.

The equaliser came soon after, with just minute minutes until the interval. Woking loanee Jake Gray scored to keep up his fine run of individual form since arriving at the Beveree.

After the interval both sides had chancing to claim all three points. The Beavers threatened from set pieces with Hill and Cox both drawing saves from King.

Top scorer Danilo Orsi-Dadomo nearly scored a sublime chip having done well to control the through ball but the City keeper did well to get fingertips on the ball.

Meanwhile Oxford's own top scorer, Zac McEachran, saw an effort well saved by Henry at the expense of a corner, although the resulting delivery did not lead to a significant chance.

Late on a header from Sam Deadfield nearly won the game at the death but King produced yet another fine save to see the game finish level, on a day on which both men between the stick had fine performances.

McCann Named Manager Of The Month

Hampton manager Gary McCann has been awarded the Manager of the Month award for February in the National League South.

Hampton had a fine month with a tally of three wins, one draw, and just a sole defeat during the course of the month. Stand out matches include the Beavers emphatic 7-1 win over Hungerford Town, as well as crucial victories against fellow playoff contenders away from home at Dartford (2-1) and Maidstone United (2-1).

Speaking to club media McCann said "It's obviously an honour to receive the National League Manager of the Month award, but it's very much the collective that wins these awards. Every one of the management team and all the players have played their part and I'm very grateful to them."

McCann becomes the first Beavers boss to win the award since Alan Dowson in January 2018.

The National League Announces Suspension

The National League, the governing body which oversees the National League South in which Hampton play, have announced that all fixtures are now suspended until at least 3rd April.

The National League has announced that it will continue to monitor the situation, as the current coronavirus pandemic continues.

Hampton & Richmond Borough are currently in eighth position at the time of the league's suspension. They are currently 3 points off a playoff position but have played two fewer games than Dorking Wanderers in seventh meaning the Beavers could go into the playoffs as and when their next fixtures are completed.

Stay safe Beavers fans!

Coronavirus Update: Brentford FC Community Sports Trust will support local children and adults to remain active

In light of the government's decision to close all schools – along with the FA's decision to postpone grassroots football for the foreseeable future – Brentford FC Community Sports Trust have postponed the majority of its community activity. Despite these challenging circumstances, the Trust will be:

- Working in schools that remain open to vulnerable children and children of keyworkers.
-
- Developing engaging and innovative online content, which keeps children and adults in the local area active in their homes.
-
- Supporting our most vulnerable participants through phone calls and online contact.

Lee Doyle, Chief Executive of Brentford FC Community Sports Trust, said:

“Our commitment to local communities remains steadfast. We will be innovative in how we can create a positive difference in the most challenging of times. We are working closely with partner schools and local stakeholders to support those most in need during this crisis and we hope to utilise our inspirational workforce and wealth of resources to help them.”

The Trust will be uploading its online content very soon.

If you have an idea of how Brentford FC Community Sports Trust can help during the crisis, please contact the Trust at enquiries@brentfordfcst.com



Community Sports Trust

RFU Statement on 2019/20 Season

Today, in a letter to rugby clubs in England, Bill Sweeney, RFU CEO, has confirmed the end of the 2019/20 season for all league, cup and county rugby in England with the exception of the Gallagher Premiership, which the RFU is in active discussions with.

The decision to confirm the end of the season was taken to assist with long term planning and provide clarity to the game at a time of continuous change.

The RFU continues to work on a range of options to support clubs at this challenging time and aims to outline these in more detail by mid-April.



Full details contained in the letter can be viewed [here](#).

New service gives cyclists advice for essential journeys amid calls for London to keep cycling unlocked

- Many global cities have seen a surge in cycling as people avoid public transport during COVID-19 pandemic
- Public Health Modelling expert at Cambridge University says providing safe cycling during the pandemic is crucial
- The London Cycling Campaign introduces Facebook Messenger, phone and email advice service for people who need to make essential journeys and are considering cycling during the outbreak

The far-reaching effects of the global pandemic has seen global cities turn to bikes to help tackle the spread of Coronavirus.

New York witnessed a surge in people cycling to avoid crowded trains and Bogotá introduced an additional 100km of 24hr emergency cycleways to reduce close contact and promote safe, essential journeys. In Germany this week, the Health Minister advised people to avoid public transport and to “go by bike or foot”.

Meanwhile, social media users in London reported packed platforms on its Underground network, which closed 40 stations yesterday and geared itself to focus on providing transport for key workers.

Today, London Cycling Campaign has launched a cycling advice service for those considering cycling during the Coronavirus pandemic. A new chatbot on Facebook Messenger will provide advice, for people who want to cycle for essential journeys for the first time, as well as those returning to cycling, and people who cycle already but need additional help or information during these exceptional circumstances.

As well as FAQs, the London Cycling Campaign, a registered charity, will have staff and volunteers on hand to advise people through live chat, phone and email; on basic cycle skills, locking and parking bikes, safe route planning, where to buy bikes and gear and cycling safely in traffic, including near HGVs and lorries.

The free service comes as the charity says it expects there may be an increase in the number of people choosing to cycle over the coming weeks.

Dr Ashok Sinha, Chief Executive of the London Cycling Campaign says:

“As the coronavirus outbreak in London is unfolding so quickly it’s important to stay up to date with the latest advice, but it is likely that cycling will play its part in helping London’s journey through this crisis.

“People, including key workers, who have to make essential journeys throughout this time, may be looking to avoid public transport and cycle instead for essential journeys.

“We want to do everything possible to make sure those who need to move around are able to do so in the safest possible way.”

Earlier this week, transport and public health academics called on the government to enable safe walking and cycling during the Covid-19 pandemic in an open [letter](#).

Dr. James Woodcock, program lead for public health modelling at Cambridge University’s MRC Epidemiology Unit, one of those calling for cycling to be safeguarded, says:

“Protecting the right to safe cycling is crucial. With public transport restricted, it will be increasingly important for journeys that people, such as key workers, still need to make.”

“It can help people avoid unnecessary car trips, thereby improving air quality and reducing the risk of respiratory illnesses, while contributing to the regular exercise we need.”

“To cater for increased demand, reduce injury risk, and keep cyclists spaced apart we should be following the example of Bogota, where temporary protected cycle tracks have been constructed on major roads”.

You can access the free advice service via Facebook Messenger at:
<https://www.facebook.com/LondonCyclingCampaign/>



Light Up At Night!!



Stay Safe
When cycling at night
always use a light

A Twickenham Tribune Campaign
www.TwickenhamTribune.com

SUSPENSION OF DELIVERY HOURS NECESSARY IN INDUSTRY RESPONSE TO COVID-19, SAYS FTA

The London Councils' decision to suspend the London Lorry Control Scheme (LLS) will allow logistics businesses to keep supermarkets and other retailers stocked during the COVID-19 pandemic, according to FTA. The business organisation, which represents the logistics sector, is thrilled the government has listened to its advice and agreed to suspend the LLS until 31 April 2020.

David Wells, CEO of FTA, recently wrote to the Chair of London Councils urging him to extend the hours in which deliveries can be made to supermarkets to help keep shelves stocked during this crisis. He comments:

“FTA and its members strongly welcome the London Councils' decision to listen to our advice and suspended temporarily the London Lorry Control Scheme; this is a vital step forward in the industry's response to the challenges posed by COVID-19. By extending the hours in which deliveries can be made, it strengthens the resilience of the supply chain and helps businesses to keep supermarkets stocked with the essential items consumers need to remain healthy and safe during this unprecedented time, including food, hygiene products and other basic items.”

Mr Wells continues: “We advise all logistics businesses affected by this decision to follow the guidance and code of practice developed by Transport for London, with support from FTA. By following this advice, operators can understand how to retime their deliveries effectively, while not disturbing local residents.”

The guidance and code of practice are available to view here: <https://tfl.gov.uk/info-for/deliveries-in-london/delivering-efficiently/deliveries-toolkits#on-this-page-1>

Efficient logistics is vital to keep the UK trading, directly having an impact on more than seven million people employed in the making, selling and moving of goods. With Brexit, new technology and other disruptive forces driving change in the way goods move across borders and through the supply chain, logistics has never been more important to UK plc. FTA is one of the biggest business groups in the UK, supporting, shaping and standing up for safe and efficient logistics. It is the only business group in the UK that represents all of logistics, with members from the road, rail, sea and air industries, as well as the buyers of freight services such as retailers and manufacturers whose businesses depend on the efficient movement of goods.



**Leading UK
Logistics**

Defence capabilities - delivering what was promised

The Ministry of Defence (MoD) is struggling to deliver key parts of the UK's planned defence capabilities programme, according to a National Audit Office (NAO) report published today.

New military capabilities – the combination of equipment, trained personnel, infrastructure and information needed to meet a specific requirement of the Armed Forces – are pivotal to delivering the UK's defence policy.

These capabilities cover major projects such as offshore patrol vessels, fighter aircraft, drones and battlefield communication systems. The estimated total procurement cost of the 32 most significant defence projects and programmes is £196.2 billion. To deliver such capabilities, the MoD employs around 20,000 staff.

The NAO finds that projects are not being consistently delivered to the expected standard or on time. At a time of fast-paced technological developments and global change, it is essential that the MoD can make swift and full use of the capabilities it needs as planned. Failure to deliver them on time is likely to undermine the MoD's ability to carry out its key tasks, and lead to overextended use of existing assets, and additional costs.

Ten of the MoD's 32 most significant projects and programmes either require urgent action to get back on track, or already cannot be delivered on time. Whereas, five of the 32 are currently likely to be delivered on schedule. These projects and programmes are forecast to be on average more than two years late by the time they are declared as fully operational.

A persistent ongoing problem the MoD faces is equipment delivered either late or faulty by its suppliers. Nearly a third of the 32 most significant projects report serious issues with suppliers. In some cases, poor performance has persisted over a number of years.

MoD project and delivery teams are under-resourced and lack essential skills, contributing to delays in delivery. Six of the 32 projects face shortfalls of more than 20% in their programme teams. The report also highlights shortages of key staff and how some teams are reliant on consultancy support. The MoD also does not have the information it needs to hold teams to account and make strategic decisions.

The NAO has also identified examples where poorly defined delivery 'milestones' have meant the MoD has been unclear what has actually been achieved. Projects can be declared 'fully operational' even if they are not or if testing is incomplete.² In some cases, this has affected MoD's ability to use equipment in the way intended.

In response to these challenges, the MoD is introducing a new approach to procurement, designed to speed up delivery, and allow it to flexibly upgrade equipment in response to technological change. For this to successfully tackle the issues highlighted in the report, the NAO emphasises that key decision makers must have an accurate and current understanding of the level of capability that has been delivered.

£196.2bn 10

5

the estimated total procurement cost of the 32 most significant defence capabilities that the Ministry of Defence (the Department) is bringing into service

number of the Department's 32 most significant defence capabilities that require 'urgent action' to deliver in full, or are already 'undeliverable' to the current timetable

number of the Department's 32 most significant defence capabilities where delivery is 'probable' or 'highly likely' to be in line with schedule

12 months

average forecast delay to the delivery of an initial operating capability for the Department's most significant defence capabilities

26 months

average forecast delay to the delivery of a full operating capability for the Department's most significant capabilities

10

number of the Department's 32 most significant defence capabilities which face serious issues with supplier engagement and/or performance

9

number of the Department's 32 most significant defence capabilities which have significant skills shortages that are impacting on deliverability

12

number of additional Senior Responsible Owners that the Department calculated in 2018 it would need if each of the most significant defence programmes was to have its own

Gareth Davies, head of the NAO, said:

“It is essential that the MoD improves the way it introduces important new defence capabilities into service. This includes ensuring that pressure to be seen to deliver quickly does not lead to it accepting incomplete projects, and making decisions on the basis of incomplete reporting.”



National Audit Office

LIDL RECRUITING FOR UP TO 2,500 JOBS IN ITS STORES

The new roles will provide temporary employment for those currently seeking work. New recruits will be able to start immediately, with pay matching the Living Wage, as recommended by the Living Wage Foundation.

The move will lead to around 2,500 jobs being created nationwide across Lidl's 800 stores.

20th March 2020: Lidl is hiring to help with an extremely busy time for stores – a move that will lead to around 2,500 jobs being created, helping those currently seeking employment.

The supermarket, which has 800 stores across England, Scotland and Wales and 24,500 employees, is looking for Stock Assistants on a four-week fixed term contract to start immediately, with wages starting from a competitive hourly rate of £9.30 - matching the Living Wage rates as recommended by the Living Wage Foundation.

In a role that will support those currently in need of work during this difficult time, the new hires will be responsible for working together to keep the store clean, tidy and the shelves well stocked so that customers can get the products they need. Shifts could include mornings, evenings and weekends.

Christian Härtnagel, CEO at Lidl GB commented: "Our store colleagues are doing an incredible job at keeping our shelves stocked, and serving communities during an extremely challenging period. Temporarily expanding our teams is one way we can help support our colleagues and customers, whilst providing work to those that have had their employment affected by the current situation."

In addition to creating new temporary jobs, Lidl has given colleagues in office-based roles the opportunity to work in store to help provide extra support.

The supermarket is also supporting colleagues who are having to self-isolate due to symptoms through flexible options including sick pay, holiday pay, advanced holiday pay and mobile working where applicable.

Those looking to apply for one of the new roles should visit [lidlcareers.co.uk/stores/stock-assistant](https://www.lidlcareers.co.uk/stores/stock-assistant) to find out more.

Half Page

Quarter Page
Landscape

Quarter Page Portrait

Eighth Page

Eighth Page
Landscape

Example advert sizes shown above

Thousands read The Twickenham & Richmond Tribune

If you are reading this you could be advertising your business with
The Twickenham & Richmond Tribune. Community rates are
available

Contact: advertise@TwickenhamTribune.com

View ad details at www.TwickenhamTribune.com/advertise

Contact

contact@TwickenhamTribune.com
letters@TwickenhamTribune.com
advertise@TwickenhamTribune.com



Published by:

Twickenham Alive Limited (in association with World InfoZone Limited)
Registered in England & Wales
Reg No 10549345

The Twickenham Tribune is registered with the ICO under the Data
Protection Act, Reg No ZA224725

©Twickenham Alive Limited. All rights reserved. No part of this publication may be used or reproduced without the permission of Twickenham Alive Limited. While we take reasonable efforts, this online newspaper cannot be held responsible for the accuracy or reliability of information. The views and opinions in these pages do not necessarily represent those of Twickenham Alive Limited or The Twickenham & Richmond Tribune. [Terms & Conditions](#)